

SUSPENSION - REAR

Article Text

1992 Mitsubishi Mirage

For a a a a

Copyright © 1998 Mitchell Repair Information Company, LLC

Monday, April 01, 2002 10:19AM

ARTICLE BEGINNING

1992 SUSPENSION

Chrysler Motors/Mitsubishi Rear Suspension

Chrysler Motors: Colt, Colt 200, Colt Vista, Stealth,
Summit, Summit Wagon

Mitsubishi: Diamante, Eclipse, Expo/Expo LRV,
Galant, Mirage, Precis, 3000GT

DESCRIPTION

NOTE: Diamante, Galant, Stealth and 3000GT may be equipped with Electronically Controlled Suspension (ECS). The suspension remains the same, but it is electronically controlled. For testing and diagnosis information on electronically controlled suspension, see appropriate ELECTRONIC SUSPENSION article in the SUSPENSION Section.

Colt, Colt 200, Eclipse FWD, Galant FWD, Mirage & Summit
Rear suspension system is a 3-link type with "U"-shaped torsion axle beam. See Fig. 1.

Diamante, Stealth FWD & 3000GT FWD
Rear suspension system is multi-link type with hydraulic shock absorbers, coil springs and stabilizer bar. See Fig. 2.

Eclipse AWD, Galant AWD, Stealth AWD & 3000GT AWD
Rear suspension system is an independent, double-wishbone type. System consists of upper and lower suspension arms, shock absorbers, coil springs and stabilizer bar. See Fig. 3.

Colt Vista FWD, Expo/Expo LRV FWD & Summit Wagon FWD
Rear suspension is an independent trailing arm type. System consists of low profile coil springs, suspension arms and shock absorbers. See Fig. 4.

Colt Vista AWD, Expo/Expo LRV AWD & Summit Wagon AWD
Rear suspension is an independent trailing arm type. System consists of low profile coil springs, suspension arms, shock absorbers and a stabilizer bar. See Fig. 5.

Precis
Rear suspension is an independent trailing arm type, consisting of an integral axle, suspension arms, shock absorbers, coil springs and stabilizer bar. See Fig. 6. Torsion bar is inside axle beam and not removable.

SUSPENSION - REAR

Article Text (p. 2)

1992 Mitsubishi Mirage

For a a a a

Copyright © 1998 Mitchell Repair Information Company, LLC

Monday, April 01, 2002 10:19AM

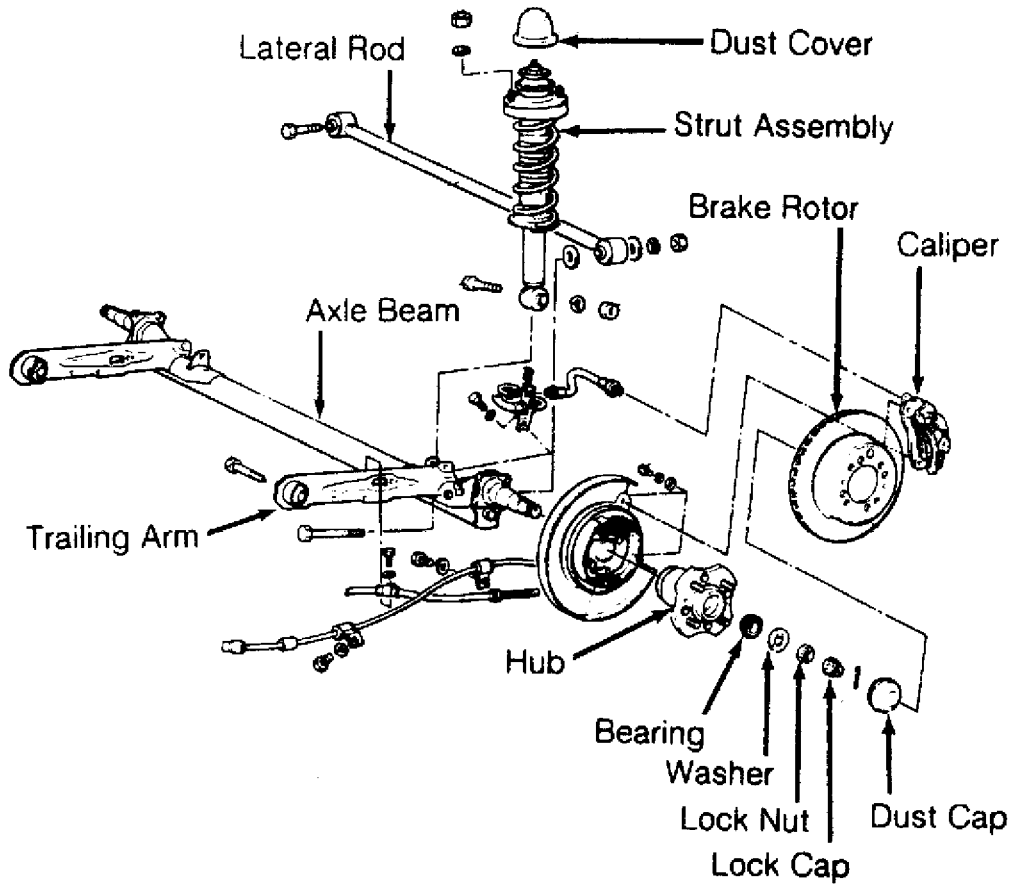


Fig. 1: Exploded View Of Rear Suspension (Eclipse FWD Shown; Colt, Colt 200, Galant FWD, Mirage & Summit Are Similar)
Courtesy of Mitsubishi Motor Sales of America.

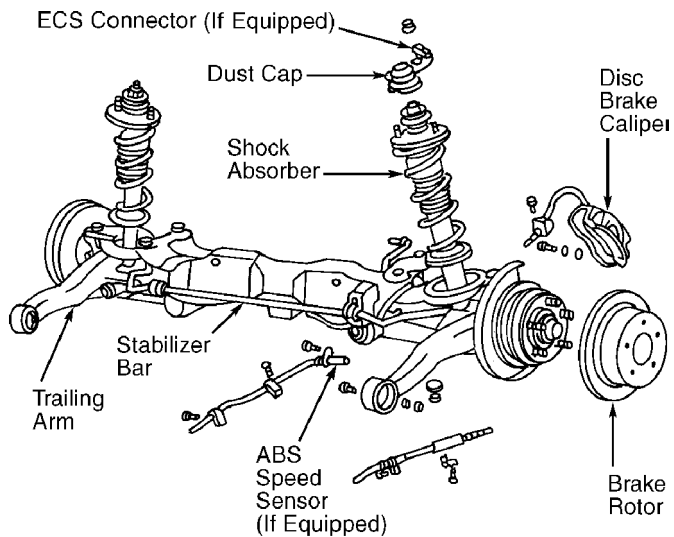


Fig. 2: Exploded View Of Rear Suspension (Diamante, Stealth FWD & 3000GT FWD)
Courtesy of Mitsubishi Motor Sales of America.

SUSPENSION - REAR

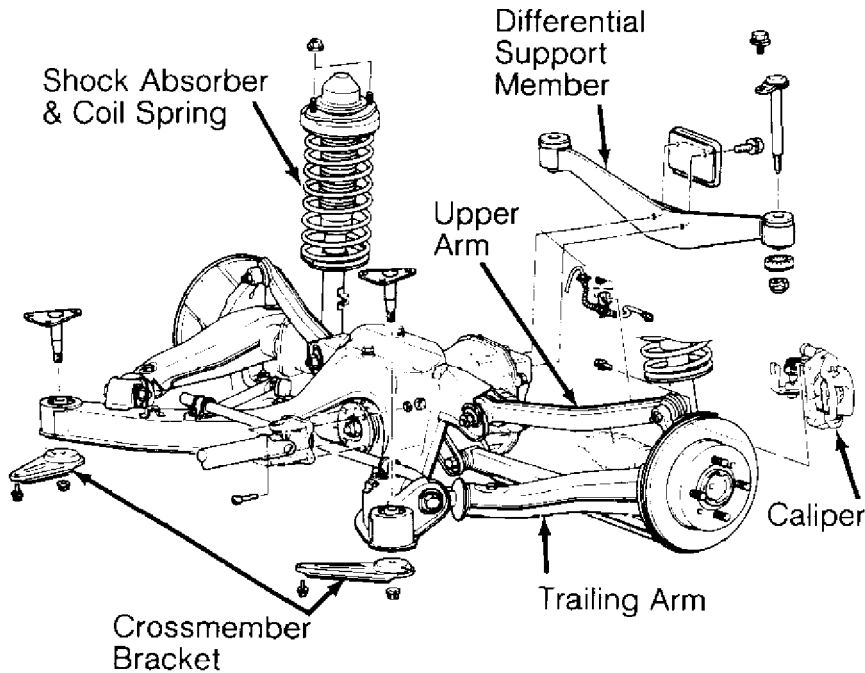
Article Text (p. 3)

1992 Mitsubishi Mirage

For a a a a

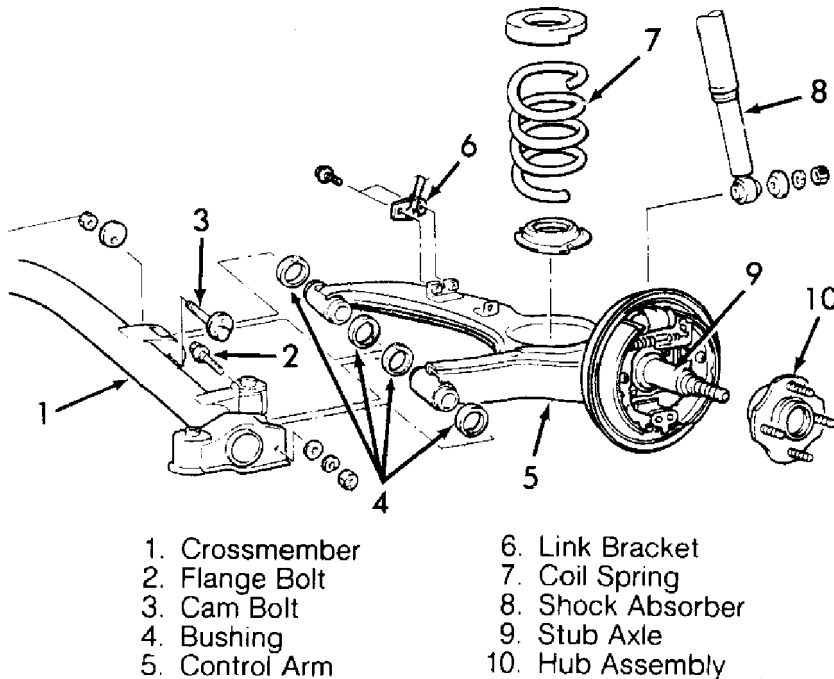
Copyright © 1998 Mitchell Repair Information Company, LLC

Monday, April 01, 2002 10:19AM



91A01924

Fig. 3: Exploded View Of Rear Suspension (Eclipse AWD & Galant AWD Shown; Stealth AWD & 3000GT AWD Are Similar)
Courtesy of Mitsubishi Motor Sales of America.



93B01156

Fig. 4: Exploded View Of Rear Suspension (Expo/Expo LRV FWD Shown; Colt Vista FWD & Summit Wagon FWD Are Similar)
Courtesy of Mitsubishi Motor Sales of America.

SUSPENSION - REAR

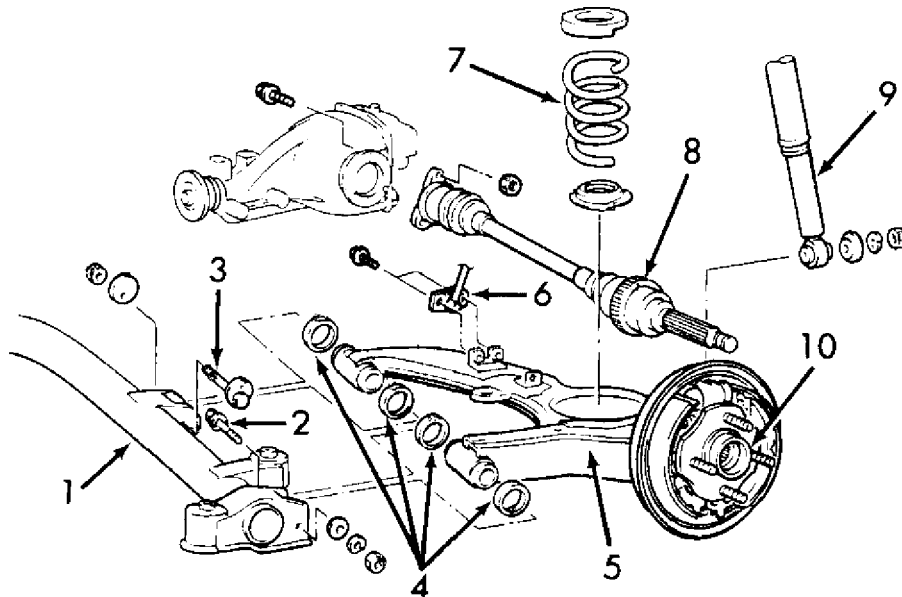
Article Text (p. 4)

1992 Mitsubishi Mirage

For a a a a

Copyright © 1998 Mitchell Repair Information Company, LLC

Monday, April 01, 2002 10:19AM



1. Crossmember

2. Flange Bolt

3. Cam Bolt

4. Bushing

5. Control Arm

6. Link Bracket

7. Coil Spring

8. Drive Shaft

9. Shock Absorber

10. Hub Assembly

93D01157

Fig. 5: Exploded View Of Rear Suspension (Colt Vista AWD, Expo/Expo LRV AWD & Summit Wagon AWD)

Courtesy of Mitsubishi Motor Sales of America.

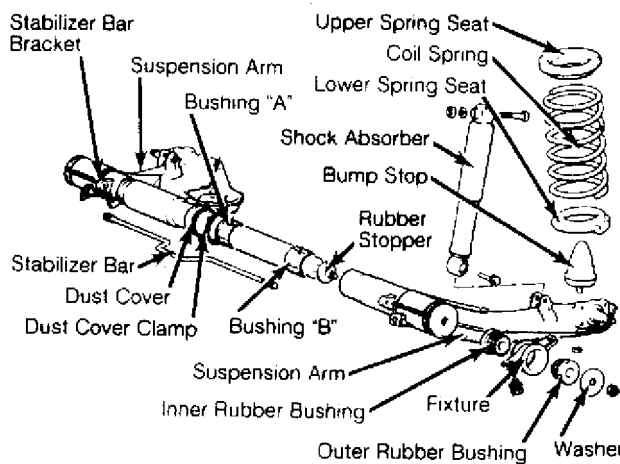


Fig. 6: Exploded View Of Rear Suspension (Precis)

Courtesy of Mitsubishi Motor Sales of America.

ADJUSTMENTS & INSPECTION

WHEEL ALIGNMENT SPECIFICATIONS & PROCEDURES

SUSPENSION - REAR

Article Text (p. 5)

1992 Mitsubishi Mirage

For a a a a

Copyright © 1998 Mitchell Repair Information Company, LLC

Monday, April 01, 2002 10:19AM

NOTE: See SPECIFICATIONS & PROCEDURES article in the WHEEL ALIGNMENT Section.

WHEEL BEARING

1) Raise and support vehicle. Remove rear wheel assembly. Remove brake disc or drum if necessary. Measure axle shaft end play using dial indicator. See AXIAL END PLAY & ROTARY SLIDING RESISTANCE SPECIFICATIONS table.

2) If end play exceeds limit, retighten wheel bearing nut or companion flange nut (if equipped) to specification. See appropriate TORQUE SPECIFICATIONS table at end of article. DO NOT back off wheel bearing nut more than 15 degrees to align cotter pin holes (if equipped). Recheck end play. If end play exceeds limit, replace wheel bearings.

3) Check rotary sliding resistance. Attach a spring scale to hub bolt. Measure rotary sliding resistance by pulling spring scale at a 90-degree angle to hub bolt. Note measurement when hub begins to rotate. See AXIAL END PLAY & ROTARY SLIDING RESISTANCE SPECIFICATIONS table. If resistance exceeds limit, replace wheel bearing.

AXIAL END PLAY & ROTARY SLIDING RESISTANCE SPECIFICATIONS

Application	End Play In. (mm)	Rotary Resistance Lbs. (kg)
Colt, Colt 200, Mirage & Summit0080 (.200)	4.9 (2.2)
Eclipse FWD0040 (.100)	7.0 (3.1)
Eclipse AWD, Galant AWD, Stealth AWD & 3000GT AWD0310 (.790)	2.6 (1.2)
Colt Vista FWD, Expo/Expo LRV FWD & Summit Wagon FWD0020 (.050)	4.0 (1.8)
Galant FWD, Stealth FWD & 3000GT FWD		
Disc Brakes0020 (.050)	7.0 (3.1)
Drum Brakes0000 (.000)	(1) 3.1 (1.4)
Precis0043 (.110)	4.8 (2.1)
	In. (mm)	INCH Lbs. (N.m)
Colt Vista AWD, Expo/Expo LRV AWD & Summit Wagon AWD002 (.05)	9 (1.1)

(1) - Specification given is for new bearing testing. If testing an old bearing, maximum resistance is 2.42 lbs. (1.1 kg).

REMOVAL & INSTALLATION

SUSPENSION - REAR

Article Text (p. 6)

1992 Mitsubishi Mirage

For a a a a

Copyright © 1998 Mitchell Repair Information Company, LLC

Monday, April 01, 2002 10:19AM

REAR SUSPENSION ASSEMBLY

Removal (Colt, Colt 200, Eclipse FWD, Diamante, Galant FWD, Mirage, Stealth FWD, Summit & 3000GT)

1) On all models except Eclipse, remove trunk side trim. On Eclipse FWD, remove hole cover. On all models, raise and support vehicle. Remove wheel assembly.

2) On models equipped with disc brakes, remove caliper and disc assembly. See Fig. 1 or 2. On all models, remove cotter pin, lock cap, lock nut, washer and outer bearing (components vary between applications). Remove hub assembly or brake drum assembly (depending on application). Remove dust cover (if equipped).

3) Disconnect and remove rear speed sensor (if equipped). Disconnect parking brake cable from brake assembly and torsion axle and arm assembly. Remove brake assembly. Disconnect brake hose. Remove brake hose bracket from torsion axle and arm assembly.

4) On Galant with electronically controlled suspension, disconnect rear height sensor rod from lateral rod. Remove tube, "O" ring, dust cover, actuator and adapter. Cover open lines and fittings using vinyl tape.

5) On all other models, remove dust cap from top of shock assembly. See Fig. 1 or 2. On all models, slightly raise torsion axle and arm assembly using a floor jack. Remove upper and lower shock absorber mounting nuts. Remove shock absorber. Disconnect lateral rod from body. Remove trailing arm bolts. Lower jack, and remove rear suspension assembly from vehicle.

Inspection

Check axle beam, lateral rod and trailing arm for deformation and damage. Check rubber bushings for deterioration, cracks and unusual wear.

Installation

1) If trailing arm bushing needs replacing, remove bushing using Bushing Press (MB991045 for Colt, Colt 200, Diamante, Mirage, Stealth, Summit and 3000GT; MB991159 for Eclipse FWD and Galant FWD). Remove lateral rod bushing using Driver (MB990947-01) and Adapters (MB990847-01 and MB990845-01).

2) Press in new arm bushing from beveled side of housing. Ensure slots in bushing face front-to-rear. Press in new lateral rod bushing using driver. Ensure bushing protrudes equally on both sides.

3) To complete installation, reverse removal procedure. Bleed brakes, and check wheel bearings. See WHEEL BEARING under ADJUSTMENTS & INSPECTION. Tighten all fasteners to specification. See TORQUE SPECIFICATIONS (FWD) table at end of article. Check wheel alignment.

Removal (Colt Vista, Eclipse AWD, Expo/Expo LRV, Galant AWD, Stealth AWD, Summit Wagon & 3000GT AWD)

1) On Colt Vista, Eclipse, Expo/Expo LRV and Summit Wagon remove shock/strut access cover. On Galant, Stealth and 3000GT, remove trunk room trim. On all models, remove center exhaust pipe and main muffler.

SUSPENSION - REAR

Article Text (p. 7)

1992 Mitsubishi Mirage

For a a a a

Copyright © 1998 Mitchell Repair Information Company, LLC

Monday, April 01, 2002 10:19AM

2) Remove shock absorber upper mounting nuts. On vehicles with electronically controlled suspension, disconnect electrical connector and remove cap from top of shock.

3) On all models, remove brake tube bracket bolt. Disconnect parking brake. Remove caliper lock pin. Rotate caliper upward, and remove caliper assembly and brake disc. Secure caliper assembly aside using wire. Cover guide pin using a cloth.

4) On Stealth and 3000GT with 4-wheel steering, disconnect pressure tubes, feed, suction and return lines. Remove power cylinder tie rod coupling nut. On models with anti-lock brakes, disconnect electrical harness connectors.

5) On all models, mark drive shaft flange and differential flange for installation reference. Disconnect drive shaft, and secure it using wire. Support differential using transaxle jack, and remove self-locking nuts.

6) Remove differential support member. Remove crossmember bracket. Lower transaxle jack slightly, and remove parking brake cable and rear speed sensor bolts. Remove cable band. Remove rear speed sensor connector and "O" ring (if equipped).

CAUTION: Ensure drive shaft does not bend excessively. Due to weight being handled, 3 people are required to lower suspension assembly.

7) Move suspension assembly toward rear of vehicle, and slowly lower suspension assembly. DO NOT contact stabilizer bar and drive shaft. Support lower arm using a wooden block to protect dust shield.

Inspection

Check crossmember for cracks and other damage. Inspect all components for damage and unusual wear. Replace components as necessary.

Installation

To install, reverse removal procedure. Ensure reference marks align when installing drive shaft. Tighten all suspension fasteners to specification with vehicle on ground and suspension unloaded. See appropriate TORQUE SPECIFICATIONS table at end of article. Check wheel alignment.

Removal (Precis)

1) Drain brake fluid. Raise and support vehicle. Remove wheel assembly. Remove brake drum and wheel bearings. Disconnect brake lines and parking brake cable. Remove brake assembly. Remove muffler and pipe.

2) Raise suspension slightly using floor jack. Disconnect shock absorbers from suspension arms. See Fig. 6. Lower suspension enough to remove coil springs and seats. Remove fixture-to-body bolts. Remove suspension assembly.

Disassembly

SUSPENSION - REAR

Article Text (p. 8)

1992 Mitsubishi Mirage

For a a a a

Copyright © 1998 Mitchell Repair Information Company, LLC

Monday, April 01, 2002 10:19AM

1) Scribe alignment marks on fixture-to-suspension arm position for reassembly reference. Scribe mark on stabilizer bar in alignment with punch mark on stabilizer bar bracket for reassembly reference.

2) Remove fixture retaining nuts at both ends of suspension arm. Remove fixtures and rubber bushings. Note position of rubber bushings. Remove dust cover clamp, and slide dust cover toward right suspension arm. DO NOT damage dust cover.

3) Separate suspension into right and left arms. Remove stabilizer bar. See Fig. 6. Remove rubber stoppers. Using a screwdriver and hammer, drive out bushing "A" from left suspension arm. Drive bushing "B" from left suspension arm.

Inspection

Check for bent or damaged suspension arm, dust cover, rubber stopper and damaged or worn bushings. Replace components as necessary.

Reassembly

1) If dust cover is replaced, slide new dust cover up to stopper on right suspension arm. Apply grease to outside of right suspension arm. Using right suspension arm, install rubber stopper into left suspension arm.

2) Apply grease to outer surfaces of bushings "A" and "B". Using Bushing Installer (MB990780) and Handle (MB990779), install bushing "B" until bushing bottoms in arm. Install bushing "A" using bushing installer. Install stabilizer bar. Slowly push suspension arms together, and wipe away excess grease.

3) Ensure stabilizer bar mark aligns with punch mark on stabilizer bar bracket. Install inner and outer rubber bushings, fixtures and washers. DO NOT apply grease to bushings or shaft threads.

4) Ensure toothed side of washer faces bushing and cutout area of fixture faces forward. Install fixtures and suspension arm in original positions. Align marks scribed during disassembly. Install nuts.

5) Tighten nuts to specification with vehicle at normal operating height and no load. See TORQUE SPECIFICATIONS (FWD) table at end of article. Pack dust cover with grease, and secure using new clamp.

Installation

1) To install, reverse removal procedure. Check upper and lower spring seats for proper installation. Tighten bolts to specification. See TORQUE SPECIFICATIONS (FWD) table at end of article.

2) Tighten suspension arm nuts and shock absorber bolts to specification with vehicle at normal operating height and no load. Check wheel bearings (if required). See WHEEL BEARING under ADJUSTMENTS & INSPECTION. Bleed and adjust brakes. Check wheel alignment.

SHOCK ABSORBERS

SUSPENSION - REAR

Article Text (p. 9)

1992 Mitsubishi Mirage

For a a a a

Copyright © 1998 Mitchell Repair Information Company, LLC

Monday, April 01, 2002 10:19AM

Removal (Except Precis)

1) On Colt, Colt 200, Mirage and Summit hatchback models, remove trunk side trim. On Diamante, Eclipse, Galant, Stealth and 3000GT, remove trunk side trim or shock/strut access cover. On Colt Vista, Expo/Expo LRV and Summit Wagon, remove shock/strut access cover.

2) On all models, raise and support vehicle. Remove wheel assembly. Support lower arm assembly using jack stands. On models with electronically controlled suspension, disconnect electrical connector from top of shock and remove actuator.

CAUTION: On models with spring assisted shock absorbers, DO NOT remove center strut rod nut until spring is compressed.

3) On all models, remove dust cap from top of shock assembly. Raise lower arm assembly using a jack. Remove mount nuts, and disconnect upper shock mount from body. Disconnect shock from lower arm assembly. Lower jack, and remove shock assembly from vehicle.

Inspection

Check shock for oil leakage, abnormal noise and poor function. Check coil spring for bending and weakness. Check rubber parts for deterioration and cracks. Check suspension arm and spindle for cracks and deformation.

Installation

To install, reverse removal procedure. Tighten all fasteners to specification. See appropriate TORQUE SPECIFICATIONS table at end of article. Check wheel alignment.

Removal (Precis)

Support suspension arm using jack. Remove lower shock absorber mounting bolt (if necessary, remove brake assembly). Lower jack slowly, and remove coil springs and seats. Remove upper shock absorber mounting bolts, and remove shock.

Inspection

Check shocks for oil leakage, abnormal noise and poor function. Check coil springs for bending and weakness. Check rubber parts for deterioration and cracks. Check suspension arm and spindle for cracks and deformation.

Installation

To install, reverse removal procedure. Tighten all fasteners to specification. See TORQUE SPECIFICATIONS (FWD) table at end of article.

STABILIZER BAR

Removal (Colt Vista AWD, Diamante, Eclipse AWD, Expo/Expo LRV AWD, Galant AWD, Stealth, Summit Wagon AWD & 3000GT)

SUSPENSION - REAR

Article Text (p. 10)

1992 Mitsubishi Mirage

For a a a a

Copyright © 1998 Mitchell Repair Information Company, LLC

Monday, April 01, 2002 10:19AM

1) Raise and support vehicle. Support rear suspension assembly using a transaxle jack. Remove self-locking nuts and crossmember brackets. Remove bracket bolt for parking brake cable and speed sensor cable (if equipped).

2) Remove stabilizer bar bracket and bushings. Remove stabilizer link nut. Remove lower joint cups and stabilizer rubber. Remove stabilizer link-to-stabilizer bar nut, and remove stabilizer link. Lower transaxle jack slightly, and remove stabilizer bar.

Inspection

1) Check bushings for wear and deterioration. Check stabilizer bar, stabilizer link and all bolts for damage and wear. Check ball joint dust cover for cracks. Replace components as necessary.

2) If ball joint dust cover needs replacing, remove clip ring and dust cover. Pack new dust cover with grease. Wrap stud threads using vinyl tape, and install dust cover. Secure cover using clip ring.

3) Check stabilizer link ball joint starting torque. Deflect ball joint stud from side to side several times. Install 2 nuts on ball joint. Measure ball joint starting torque using INCH lb. torque wrench.

4) Starting torque should be 15-28 INCH lbs. (1.7-3.2 N.m). If starting torque exceeds specification, replace link. If ball joint starting torque is less than specification, ball joint may be reused unless it has drag and excessive play.

Installation

To install, reverse removal procedure. When installing stabilizer link, hold link using a wrench and tighten nut until distance from end of bolt to edge of nut is within specification. See STABILIZER LINK SPECIFICATIONS table. Tighten all remaining fasteners to specification. See appropriate TORQUE SPECIFICATIONS table at end of article.

STABILIZER LINK SPECIFICATIONS TABLE

		Distance
Application		In. (mm)
Diamante, Stealth & 3000GT	0.20-0.28	(5.1-7.1)
Eclipse AWD & Galant AWD	0.35-0.43	(8.9-11.0)
Colt Vista AWD, Expo/Expo LRV AWD & Summit Wagon AWD	0.98-1.06	(24.9-26.9)

Removal & Installation (Precis)

See REAR SUSPENSION ASSEMBLY.

TRAILING ARM

Removal (Eclipse AWD, Galant AWD, Stealth AWD & 3000GT AWD)

SUSPENSION - REAR

Article Text (p. 11)

1992 Mitsubishi Mirage

For a a a a

Copyright © 1998 Mitchell Repair Information Company, LLC

Monday, April 01, 2002 10:19AM

1) Disconnect parking brake cable end. Remove bracket for parking brake cable and speed sensor cable (if equipped). Remove rear brake assembly, and suspend caliper using wire. Remove brake disc.

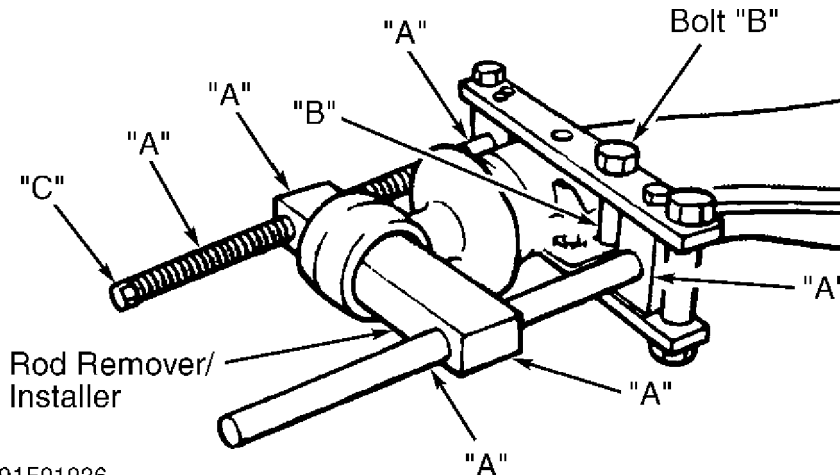
2) Disconnect drive axle from axle shaft companion flange. Hold hub using Yoke Holder (MB990767-01), and remove companion flange-to-axle shaft nut. Remove companion flange. Remove rear speed sensor and "O" ring (if equipped). Loosen upper and lower arm ball joint nuts, and disconnect ball joints.

3) Remove trailing arm installation nut and bolt. Disconnect shock absorber from trailing arm. Remove trailing arm. Check trailing arm and bushing for cracks, deterioration and wear. Replace components as necessary.

Disassembly

1) Using Bushing Arbor (MB990849) and Base (MB990646), remove bushing. Remove connecting rod bolt and nut. Install Rod Remover/Installer (MB991254) on trailing arm.

2) Apply lubricant to sliding areas marked "A" in Fig. 7. Install bolt "B" to trailing arm at point shown. Turn threaded shaft "C" on remover/installer to remove connecting rod.



91F01926

Fig. 7: Removing Connecting Rod From Front Trailing Arm (Eclipse AWD, Galant AWD, Stealth AWD & 3000GT AWD)

Courtesy of Mitsubishi Motor Sales of America.

Reassembly

If trailing arm bushing needs replacement, use bushing arbor and base to install new bushing. Press fit bushing until bushing outer pipe edge is flush with lower arm pipe edge. To complete reassembly, reverse disassembly procedure. Apply soapy water to rubber portion of connecting rod.

Installation

To install trailing arm, reverse removal procedure. Tighten all fasteners to specification. See appropriate TORQUE SPECIFICATIONS table at end of article. Check wheel alignment.

UPPER & LOWER ARMS

SUSPENSION - REAR

Article Text (p. 12)

1992 Mitsubishi Mirage

For a a a a

Copyright © 1998 Mitchell Repair Information Company, LLC

Monday, April 01, 2002 10:19AM

NOTE: Coil springs have color marks for spring identification and load classification. When replacing springs, ensure markings are correct for appropriate vehicle.

Removal (Eclipse AWD, Galant AWD, Stealth AWD & 3000GT AWD)

Loosen upper arm ball joint nut, and disconnect upper arm ball joint. Remove upper arm bolt and arm. Loosen lower arm ball joint nut, and disconnect lower arm ball joint. Hold stabilizer link using a wrench, and remove stabilizer link nut. Disconnect link from lower arm. Remove lower arm bolt, and remove lower arm.

Inspection

1) Check bushing for wear and deterioration. Check upper and lower arms for bends and breakage. Check ball joint dust covers for cracks. Check all bolts for wear and damage. Replace components as necessary.

2) Check ball joint starting torque. Deflect ball joint stud side to side several times. Install 2 nuts on ball joint. Using INCH lb. torque wrench, measure ball joint starting torque. Starting torque should be 17-78 INCH lbs. (2-9 N.m). If starting torque exceeds specification, replace arm. If ball joint starting torque is less than specification, ball joint may be reused unless it has drag and excessive play.

Installation

1) If ball joint dust cover needs replacement, remove dust cover and apply grease to lip and inside of new dust cover. Install dust cover using Installer (MB990800). Ensure dust cover is fully seated.

2) If lower arm bushing needs replacement, use Bushing Arbor (MB991246), Bushing Ring (MB991245) and Base (MB990847) to remove and install bushing. Press fit bushing until bushing outer edge is flush with lower arm edge.

3) To complete installation, reverse removal procedure. When installing stabilizer link, hold link using a wrench and tighten nut until distance from end of bolt to edge of nut is as specified. See STABILIZER LINK SPECIFICATIONS table under STABILIZER BAR. Tighten upper and lower arm nuts to specification. See appropriate TORQUE SPECIFICATIONS table at end of article. Check wheel alignment.

Removal (Colt Vista, Expo/Expo LRV & Summit Wagon)

1) Support lower arm using floor jack. Remove shock absorber from lower arm. See Fig. 4 or 5. Scribe mark coil spring and lower arm for installation reference. Slowly lower jack to remove tension from coil spring, and remove coil spring. Remove stabilizer bar (AWD models). See STABILIZER BAR. Remove brake drum or caliper assembly and disc. Remove hub assembly.

2) Remove parking brake cable end. Remove parking brake cable bracket from lower arm. Scribe mark lower arm cam bolts for installation reference. Remove crossmember-to-lower arm flange and cam bolts. Remove lower arm from vehicle.

SUSPENSION - REAR

Article Text (p. 13)

1992 Mitsubishi Mirage

For a a a a

Copyright © 1998 Mitchell Repair Information Company, LLC

Monday, April 01, 2002 10:19AM

Inspection

Check lower arm for deformation and deterioration. Check all bolts for condition and straightness. Check spring seats for cracks and wear. Check bushings for cracking and deterioration.

Disassembly

If lower arm bushings need replacement, scribe mark lower arm-to-old bushing slit. Insert a chisel between bushing and arm, and remove bushing.

Reassembly

Align slit on new bushing with scribe mark on arm, and install bushing. Press fit bushing until outer edge is flush with lower arm edge.

Installation

To install control arms, reverse removal procedure. When installing stabilizer link (AWD models), hold link using a wrench and tighten nut until distance from end of bolt to edge of nut is within specification. See STABILIZER LINK SPECIFICATIONS table under STABILIZER BAR. Tighten all nuts and bolts to specification. See appropriate TORQUE SPECIFICATIONS table at end of article. Check wheel alignment.

WHEEL BEARING

Removal (Disc Brakes FWD)

1) Raise and support vehicle. Remove wheel assembly. Remove speed sensor (if equipped). Disconnect parking brake cable and brake hose. Remove tube bracket. Remove brake disc and caliper assembly.

2) Support caliper aside. Remove hub cap, wheel bearing nut and washer (if equipped). Remove rear hub assembly. Replace rear hub assembly as unit. Separate speed sensor rotor (if equipped).

Installation

To install, reverse removal procedure. Tighten wheel bearing nut to specification. See TORQUE SPECIFICATIONS (FWD) table at end of article. Check wheel bearings. See WHEEL BEARING under ADJUSTMENTS & INSPECTION.

Removal (Disc Brakes AWD)

1) Raise and support vehicle. Remove wheel assembly. Remove speed sensor (if equipped). Remove brake caliper assembly and brake disc. Separate companion flange from drive shaft. Remove companion flange nut and washer.

2) Remove companion flange and axle shaft assembly. Remove rear speed sensor rotor (if equipped). Remove outer bearing and dust cover from axle shaft. Remove inner bearing and oil seal using Driver (MB990938-01) and Adapter (MB990928-01).

Installation

SUSPENSION - REAR

Article Text (p. 14)

1992 Mitsubishi Mirage

For a a a a

Copyright © 1998 Mitchell Repair Information Company, LLC

Monday, April 01, 2002 10:19AM

To install, reverse removal procedure. Install inner bearing using Driver (MB990938-01) and Adapter (MB990931-01). Use Seal Installer (MB990799-01) for oil seal and dust cover. Press outer bearing onto axle shaft. Check wheel bearings. See WHEEL BEARING under ADJUSTMENTS & INSPECTION.

Removal (Drum Brakes FWD)

Raise and support vehicle. Remove wheel assembly. Remove hub cap. Remove wheel bearing nut or cotter pin, lock cap, lock nut and tongued washer (components vary among models). Remove outer wheel bearing race. Remove hub assembly or brake drum. Remove inner oil seal and bearing. Remove bearing races using a brass drift.

Installation

To install, reverse removal procedure. Replace hub assembly with integral bearings as unit. Install races using Driver (MB990938-01) and Adapter (MB990926-01 or MB990928-01). Install oil seal using driver and Adapter (MB990929-01 or MB990938-01). Check wheel bearings. See WHEEL BEARING under ADJUSTMENTS & INSPECTION.

Removal (Drum Brakes AWD)

1) Raise and support vehicle. Remove wheel and brake drum. Remove drive axle from axle shaft companion flange. Hold axle shaft using Axle Holder (MB990767), and remove companion flange retaining nut. Remove companion flange. Using slide hammer, remove axle shaft.

2) Using Bearing Puller/Installer (MB990560) and hydraulic press, remove outer wheel bearing and dust cover from axle shaft. If necessary, remove inner arm to access inner bearing. See REAR SUSPENSION ASSEMBLY under REMOVAL & INSTALLATION. Remove oil seal from inside of inner arm. Using Bearing Remover/Installer (C-3893), remove inner bearing from arm.

Installation

1) Using Bearing Remover/Installer (C-3893), install inner bearing in arm. Using Seal Installer (MB990799), install seal in inner arm, with concave side facing outward.

2) Coat seal lip with grease. Install dust cover. If backing plate was removed, apply semi-drying sealant to flange area of inner arm. Install backing plate. Tighten bolts to specification. See TORQUE SPECIFICATIONS (AWD) table at end of article.

3) Using Dust Cover Installer (MB990799), install dust cover on axle shaft. Concave side of dust cover must face splined end of axle shaft. Using bearing puller/installer and press, install bearing on axle shaft, with seal surface facing toward flange side of axle shaft.

4) Install axle shaft in inner arm. Install companion flange and new flange nut. Using axle holder, tighten nut to specification. See TORQUE SPECIFICATIONS (AWD) table. Check axle shaft end play. See WHEEL BEARING under ADJUSTMENTS & INSPECTION. To complete installation, reverse removal procedure.

TORQUE SPECIFICATIONS

SUSPENSION - REAR

Article Text (p. 15)

1992 Mitsubishi Mirage

For a a a a

Copyright © 1998 Mitchell Repair Information Company, LLC

Monday, April 01, 2002 10:19AM

TORQUE SPECIFICATIONS TABLE (FWD)

Application	Ft. Lbs. (N.m)
Backing Plate-To-Arm Bolt	
Except Precis	36-43 (49-58)
Precis	22-29 (30-39)
Fixture-To-Body Bolt (Precis) (1)	65-79 (88-107)
Lateral Rod (1)	
Eclipse & Galant	
Axle Beam Side	72-87 (98-118)
Body Side	58-72 (79-98)
Except Eclipse & Galant	58-72 (79-98)
Lower Arm-To-Crossmember Nut (1)	
Colt Vista, Expo/Expo LRV & Summit Wagon	65-80 (88-109)
Shock Absorber-To-Arm Nut Or Bolt (1)	
Except Precis	58-72 (79-98)
Precis	47-58 (64-79)
Shock Absorber-To-Body Bolt Or Nut (1)	
Colt, Colt 200, Mirage & Summit	18-25 (24-34)
Colt Vista, Diamante, Eclipse, Expo/Expo LRV, Galant, Stealth, Summit Wagon & 3000GT	29-36 (39-49)
Precis	47-58 (64-79)
Suspension Arm End Nut (Precis) (1)	65-80 (88-109)
Trailing Arm Mounting Bolt (1)	
Colt, Colt 200, Mirage & Summit	94-108 (127-147)
Eclipse & Galant	72-87 (98-118)
Diamante, Stealth & 3000GT	101-116 (137-157)
Wheel Bearing Nut	
Colt, Colt 200, Mirage & Summit	108-145 (146-197)
Diamante, Stealth & 3000GT	181 (245)
Eclipse & Galant (With Disc Brakes)	144-188 (195-255)
Colt Vista, Expo/Expo LRV & Summit Wagon	166 (230)
Galant With Drum Brakes & Precis	
Step 1	14 (19)
Step 2 (2)	0 (0)
Step 3	7 (10)
	INCH Lbs. (N.m)
Brakeline Nut	108-144 (12-16)
Dust Shield Bolt	84-120 (10-14)
Hub Assembly-To-Speed Sensor Rotor Bolts	84-120 (10-14)
Load Sensing Proportioning Valve Bracket Nut	84-120 (10-14)
Speed Sensor Bolts	84-120 (10-14)

(1) - Tighten with vehicle at normal operating height and no load.

(2) - Loosen nut to specification.

SUSPENSION - REAR

Article Text (p. 16)

1992 Mitsubishi Mirage

For a a a a

Copyright © 1998 Mitchell Repair Information Company, LLC

Monday, April 01, 2002 10:19AM

TORQUE SPECIFICATIONS TABLE (AWD)

Application	Ft. Lbs. (N.m)
Brake Assembly Bolt	36-43 (49-58)
Brake Tube Bracket-To-Shock Absorber Bolt	12-19 (16-26)
Center Exhaust Pipe-To-Front Pipe Bolt	22-29 (30-39)
Companion Flange-To-Axle Shaft Nut	
Eclipse & Galant	116-159 (157-216)
Stealth & 3000GT	
Non-Turbo	14 (19)
Turbo	19-22 (26-30)
Crossmember Bracket-To-Body Bolt	51-61 (69-83)
Crossmember Bracket-To-Crossmember Bolt	80-94 (109-127)
Differential Carrier-To-Support Member Bolt	58-72 (79-98)
Differential Support-To-Body Nut	80-94 (109-127)
Drive Axle-To-Axle Shaft Flange Nut	40-47 (54-64)
Drive Shaft End Nut	145-188 (197-260)
Drive Shaft-To-Differential Nut	22-25 (30-34)
Lower Arm Ball Joint Nut	
Eclipse & Galant	43-52 (58-71)
Stealth & 3000GT	54-64 (73-87)
Lower Arm-To-Crossmember Nut (1)	
Except Stealth & 3000GT	65-80 (88-109)
Stealth & 3000GT	101-116 (137-157)
Muffler-To-Pipe Bolt	
Except Galant, Stealth & 3000GT	29-36 (39-49)
Galant, Stealth & 3000GT	22-29 (30-39)
Shock Absorber-To-Arm Bolt	65-80 (88-109)
Shock Absorber-To-Body Nut	29-36 (39-49)
Stabilizer Link-To-Stabilizer Bar Nut	25-33 (34-45)
Trailing Arm-To-Crossmember Nut (1)	
Eclipse & Galant	101-116 (137-157)
Stealth & 3000GT	145-174 (197-236)
Upper Arm Ball Joint Nut	
Eclipse & Galant	43-52 (58-71)
Stealth & 3000GT	54-64 (73-87)
Upper Arm-To-Crossmember Nut (1)	101-116 (137-157)
	INCH Lbs. (N.m)
Speed Sensor Bolts	84-120 (10-14)
Stabilizer Bar Bracket Bolt	84-120 (10-14)

(1) - Tighten with vehicle at normal operating height and no load.

END OF ARTICLE